



# DOWNTOWN STREETSCAPE IMPROVEMENTS

October 3, 2017

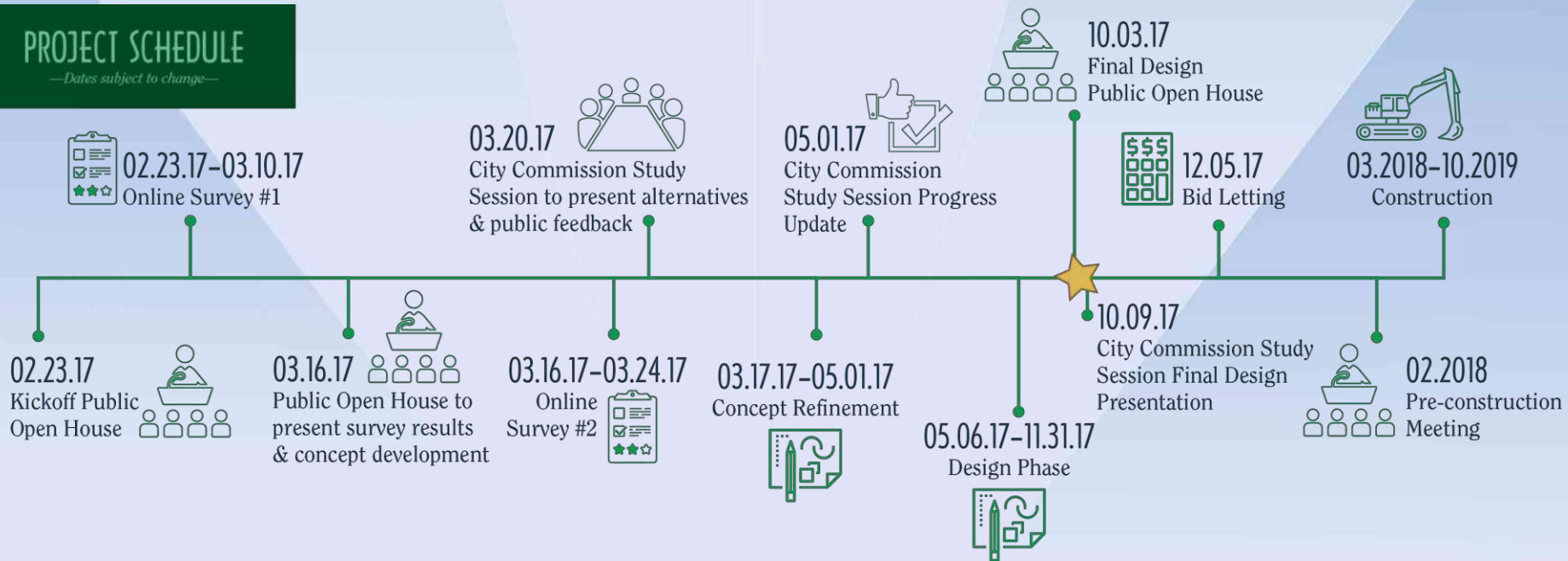
# Project Limits



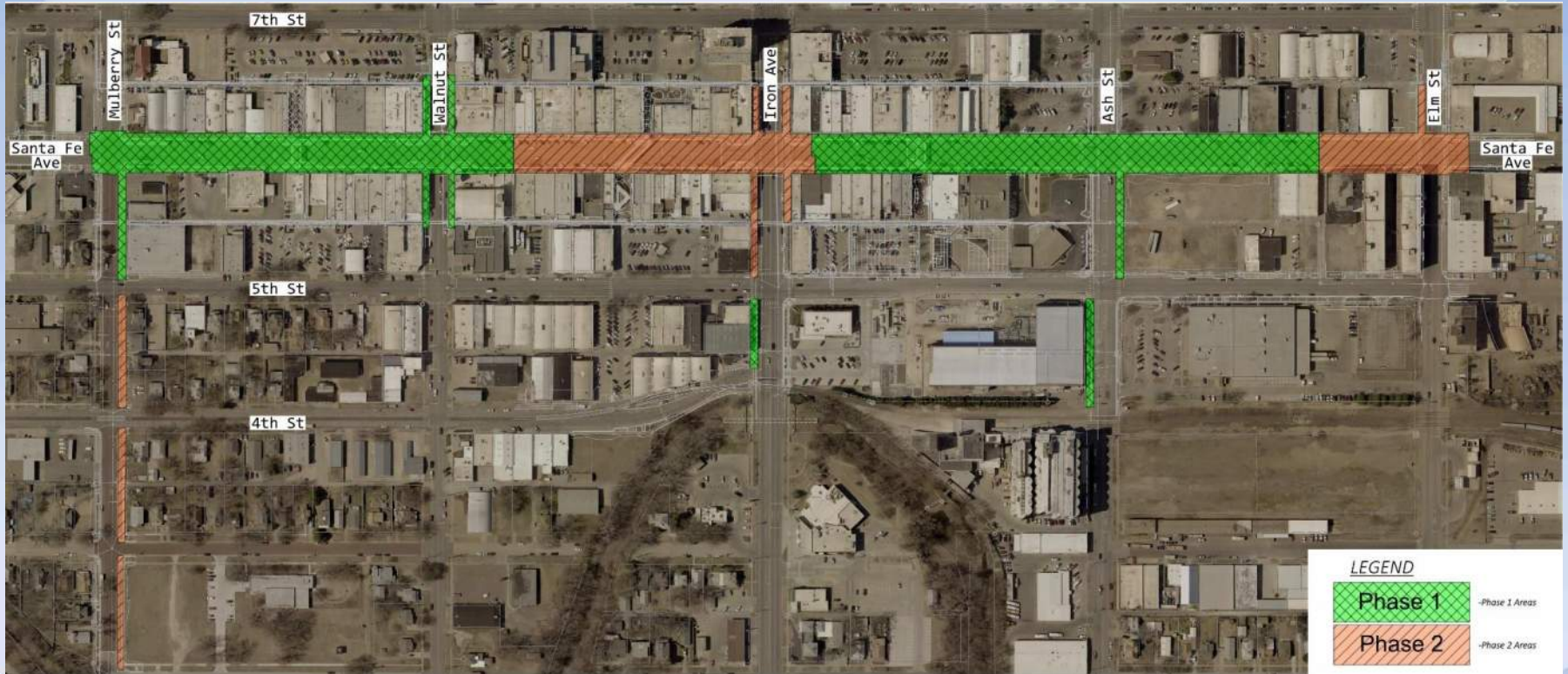
# Project Schedule

## PROJECT SCHEDULE

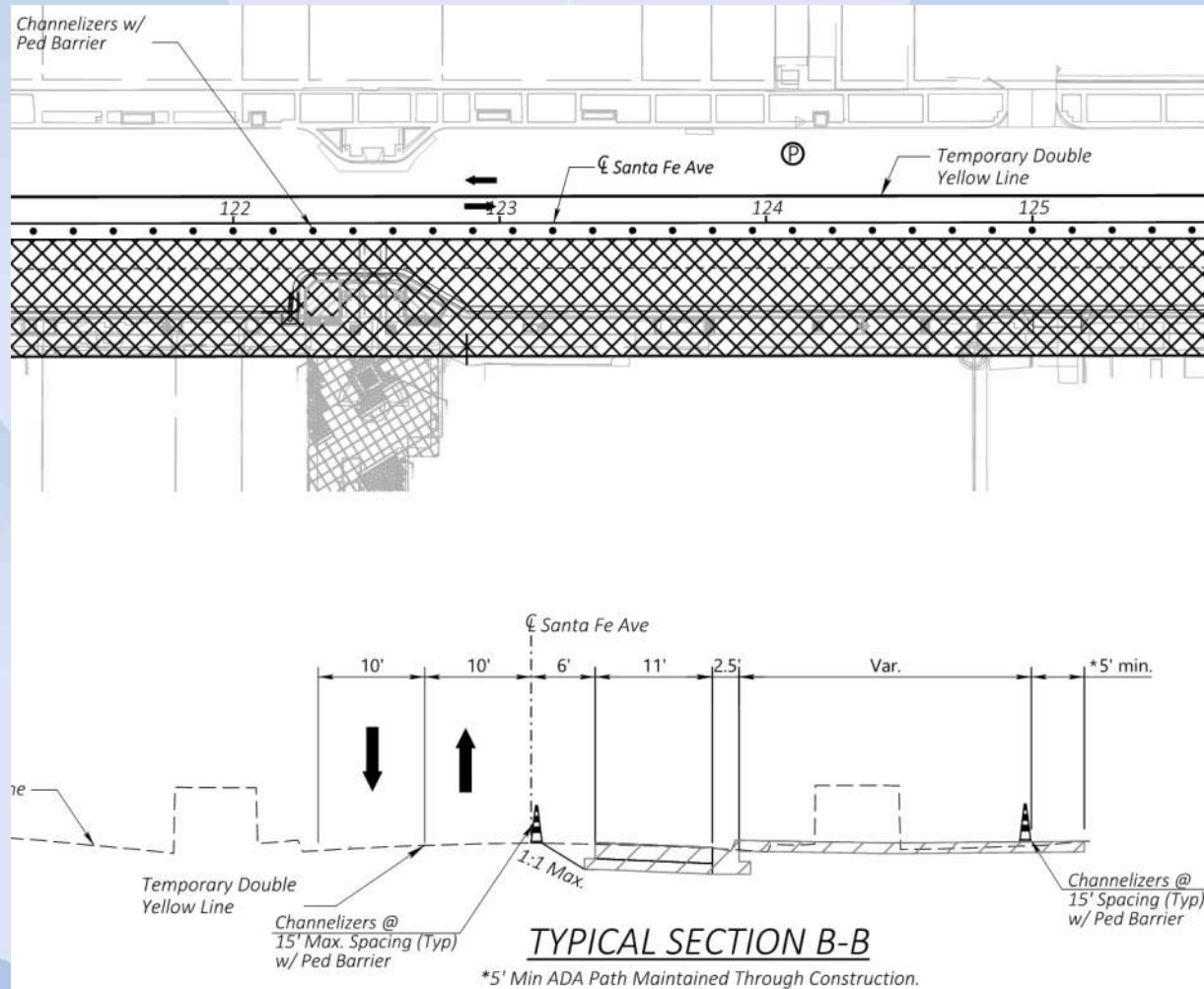
—Dates subject to change—



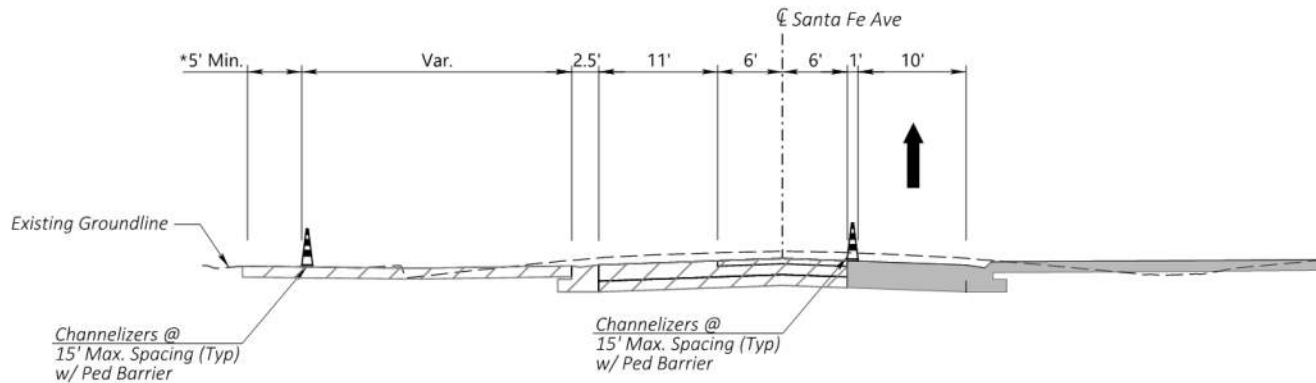
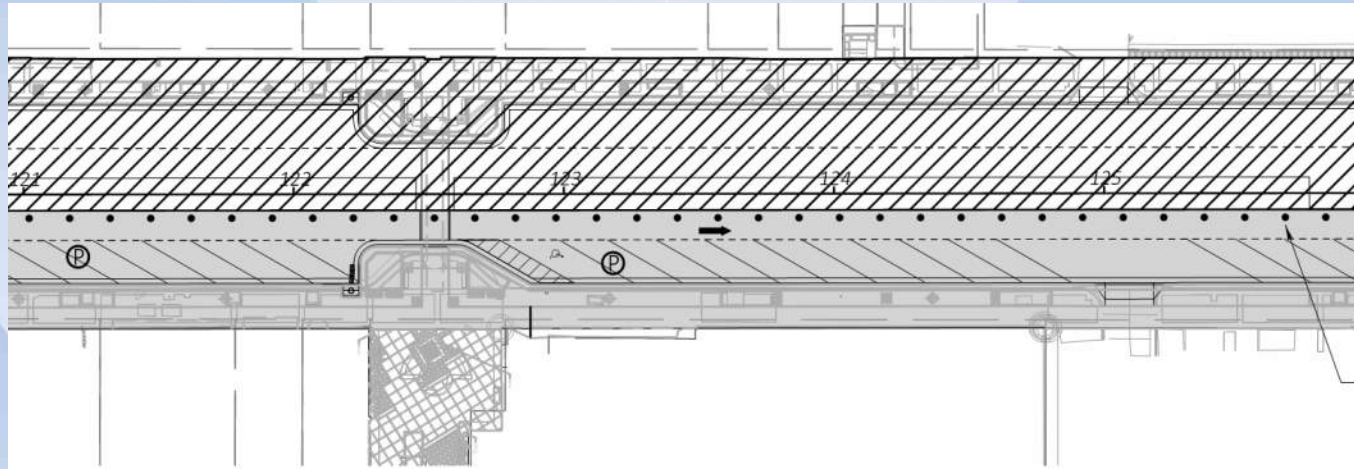
# Tentative Construction Phasing



# Tentative Construction Phasing



# Tentative Construction Phasing



## TYPICAL SECTION B-B

\*5' Min ADA Path Maintained Through Construction.



SANTA FE AVENUE STREETSCAPE: MULBERRY ST. TO WALNUT ST. 



SANTA FE AVENUE STREETSCAPE: WALNUT ST. TO IRON AVE. 

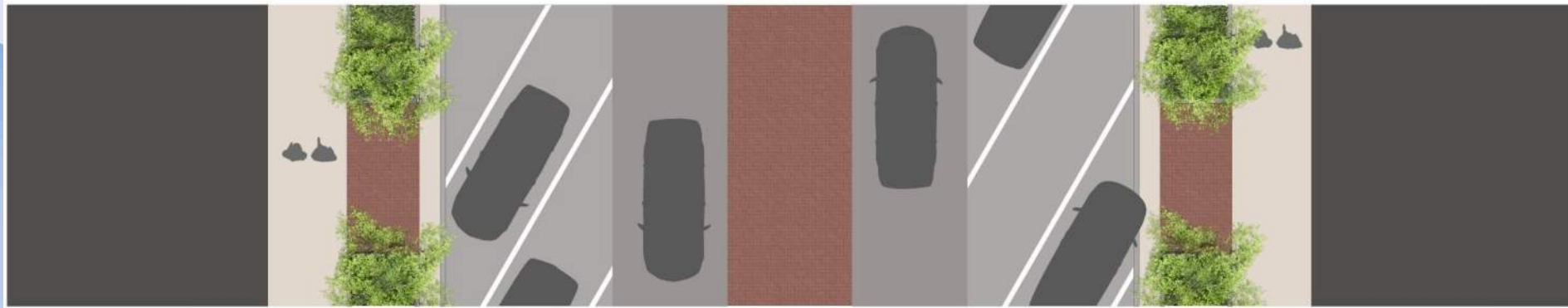
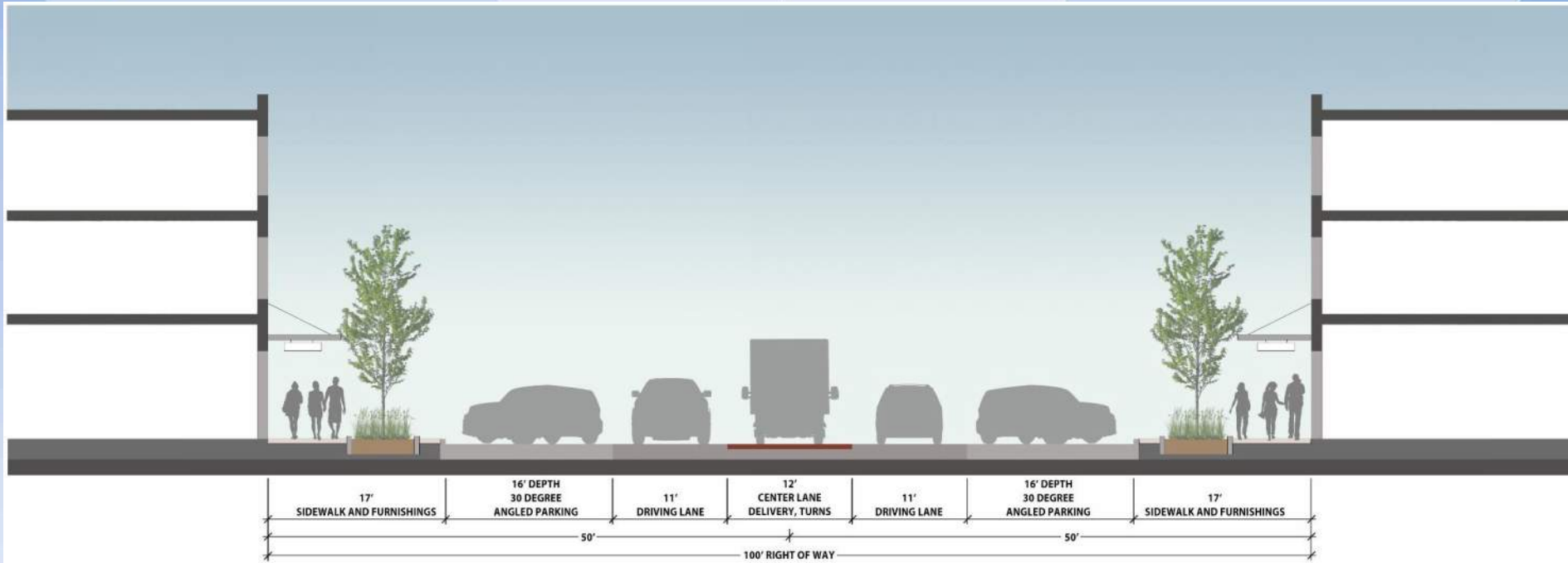


SANTA FE AVENUE STREETSCAPE: IRON AVE. TO ASH ST. 



SANTA FE AVENUE STREETSCAPE: ASH ST. TO ELM ST. 

# Streetscape Section





# General Streetscape Elements: Misc



Trash Receptacle



Bicycle Rack

# Street and Plaza Lighting



LED Street Lighting



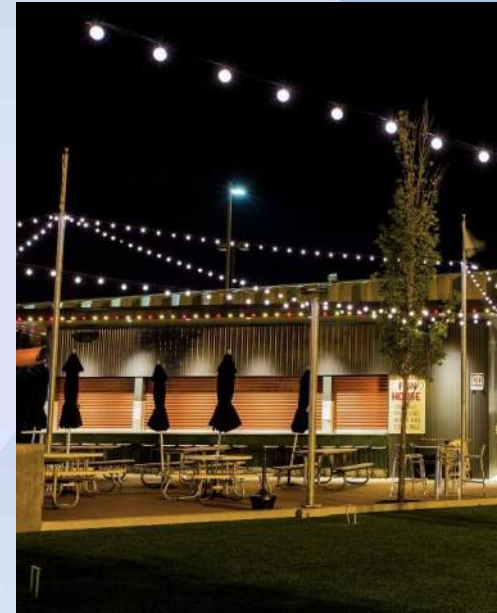
Corner Bollard



Light Column



Plaza Bollard



Festival Lighting

# Streetscape and Plaza Seating



# Brick Paver Colors

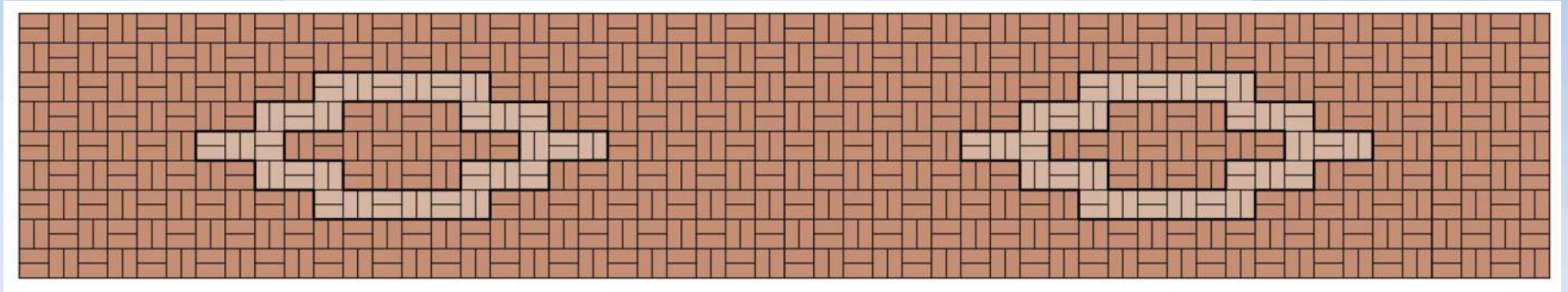
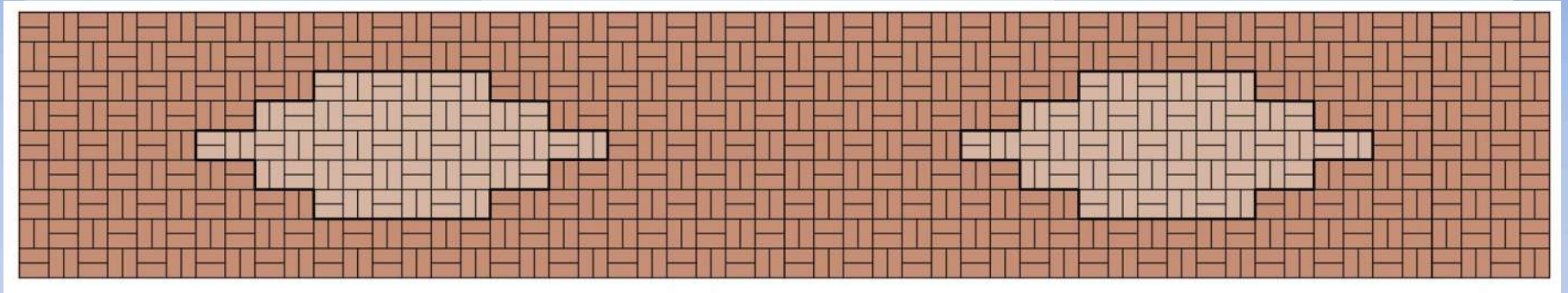


# Brick Paver Pattern Inspiration

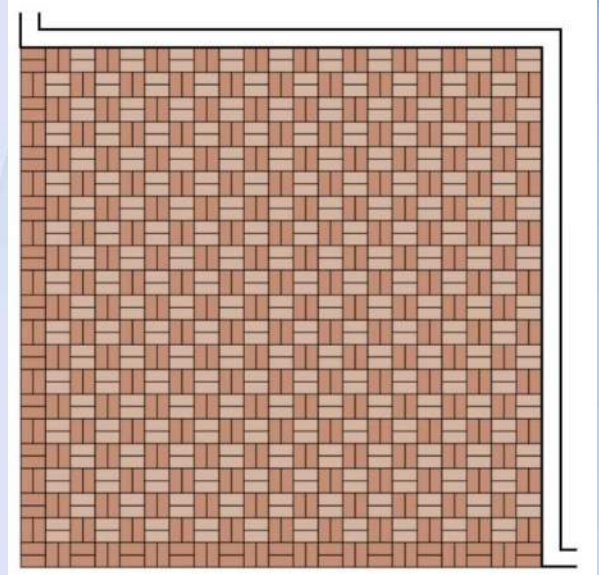
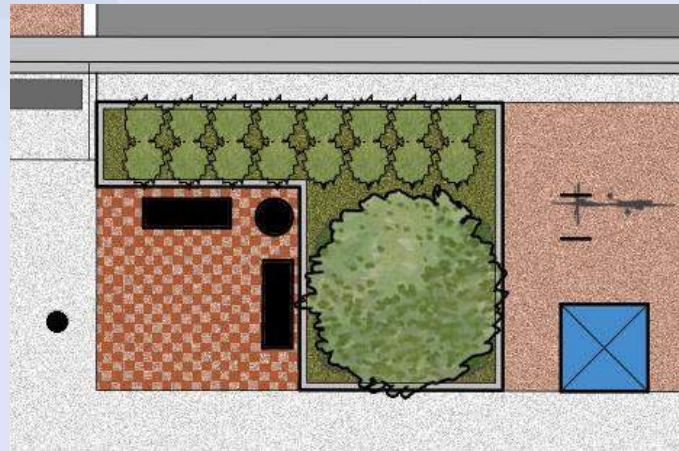


# Paver Pattern

---



# Corner Node Paver Pattern



# General Streetscape Elements: Plants

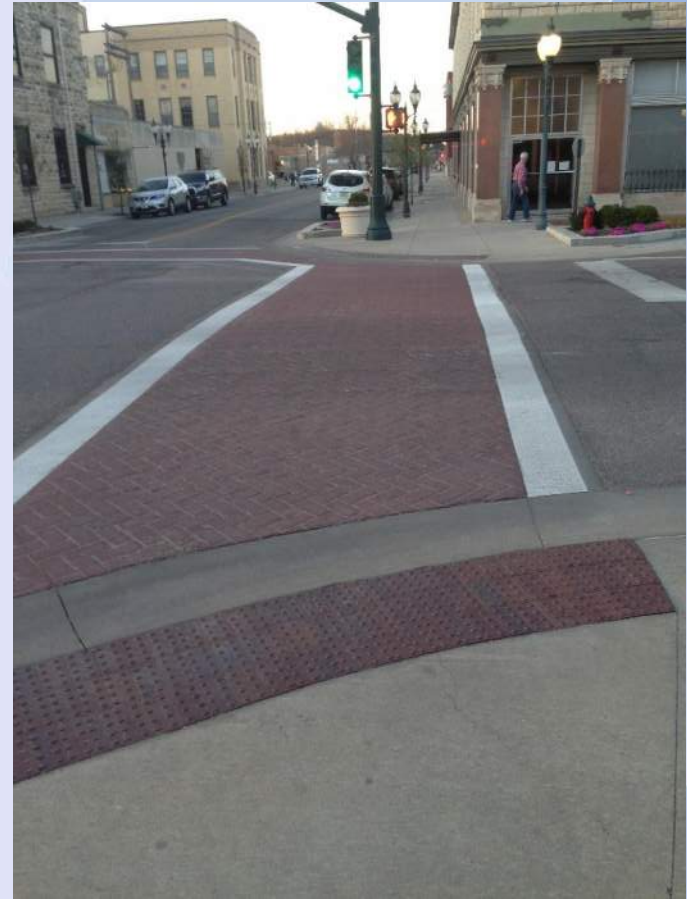




# Movable Planter Pots



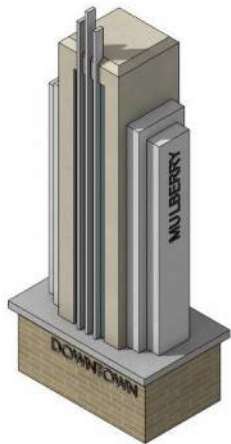
# Pedestrian Crosswalks: Brick Pavers



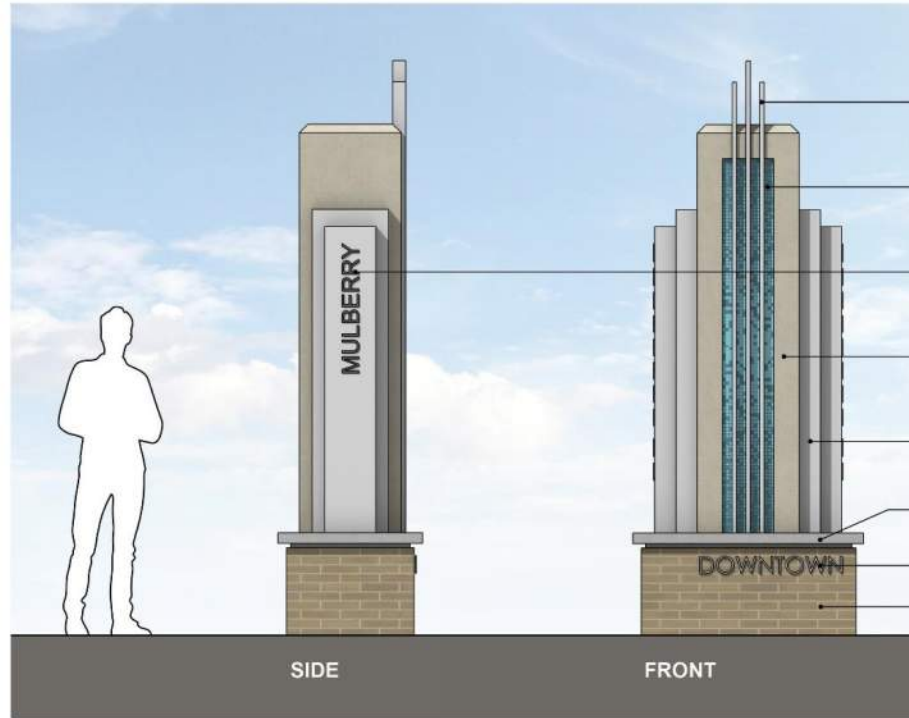
# Mid-Block Crosswalks: Signage



# Entrance Gateways – Mulberry and Elm



3D VIEW



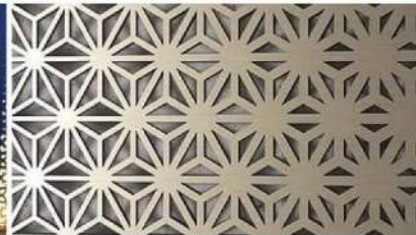
SIDE

FRONT

- Anodized Aluminum Vertical Accents
- Perforated Metal Panel w/ Decorative Art Deco Pattern (Back-Lit)
- Pin-Mounted Metal Lettering
- Decorative Concrete or Limestone Column
- Anodized Aluminum Accent Wings
- Concrete Cap (Under-Lit w/ LED Tape)
- Pin-Mounted Metal Lettering
- Brick or Tile Base



Back-Lit Perforated Metal Panels



LED Under Lighting

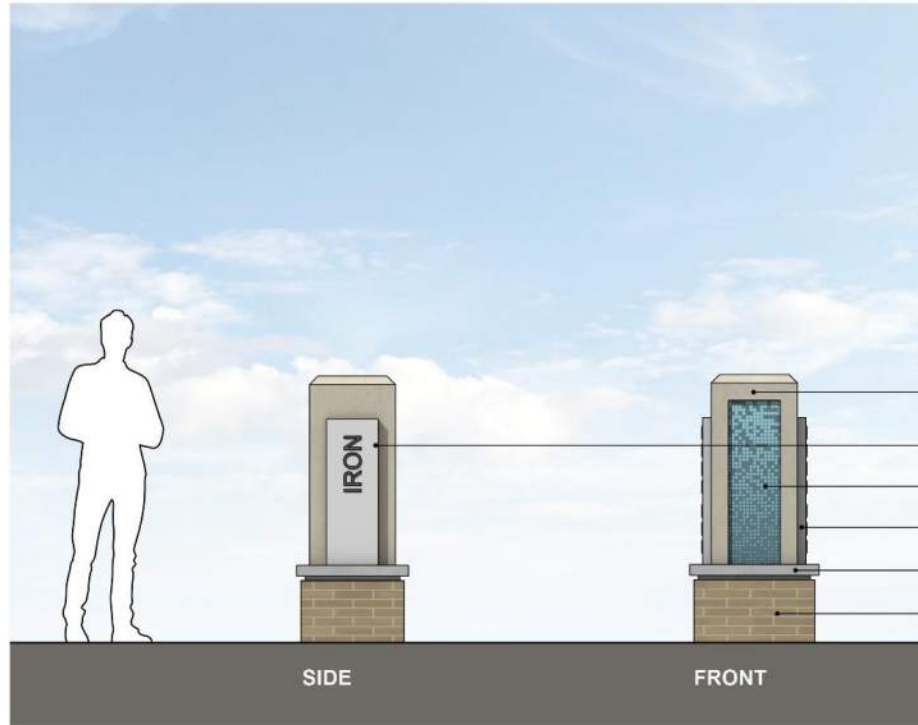


Pin-Mounted Lettering

# Corner Monuments – Walnut, Iron, Ash



3D VIEW



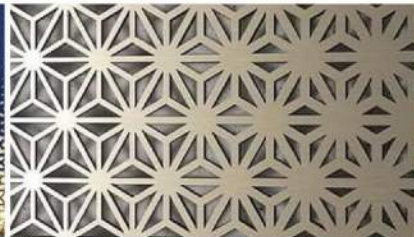
SIDE

FRONT

- Decorative Concrete or Limestone Column
- Pin-Mounted Metal Lettering
- Perforated Metal Panel w/ Decorative Art Deco Pattern (Back-Lit)
- Anodized Aluminum Accent Wings
- Concrete Cap (Under-Lit w/ LED Tape)
- Brick or Tile Base



Back-Lit Perforated Metal Panels



Brick Base W/ Concrete Cap

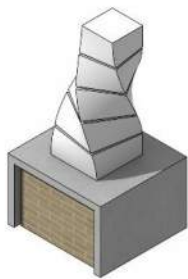


Sand Blasted Concrete

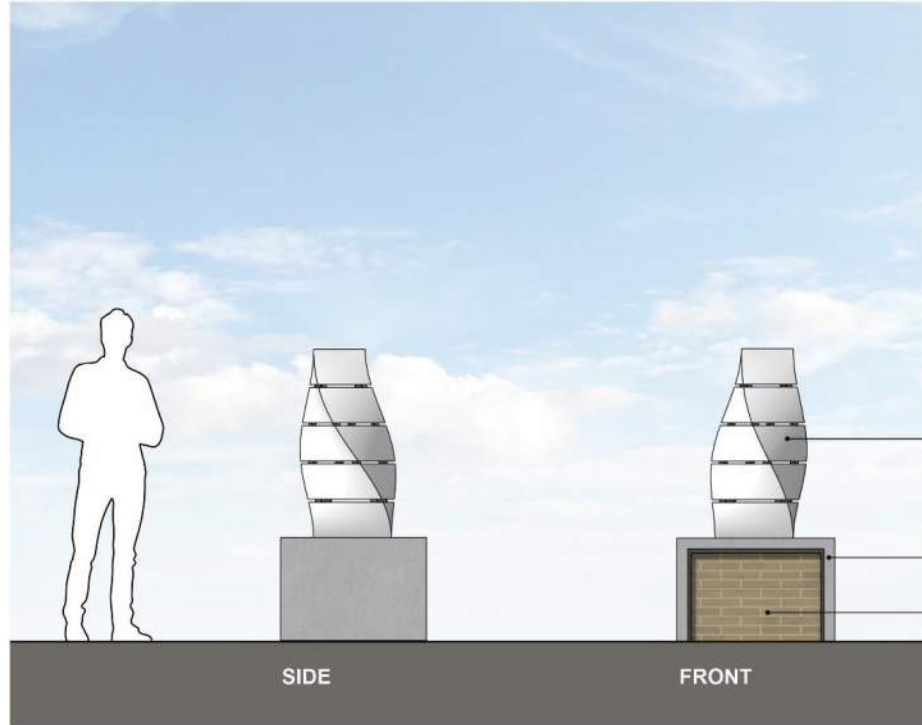


Pin-Mounted Lettering

# Sculpture Pedestal / Base



3D VIEW



Sculpture Mounted As Necessary

Concrete Cap (Under-Lit w/ LED Tape)

Brick or Tile Base

SIDE

FRONT



LED Under Lighting



Brick Base W/ Concrete Cap



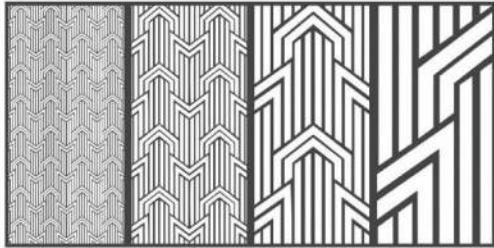
Sculpture Tour



# Overhead Structures at Midblock Crossings



# Overhead Structures Concept



Plaza Side  
→

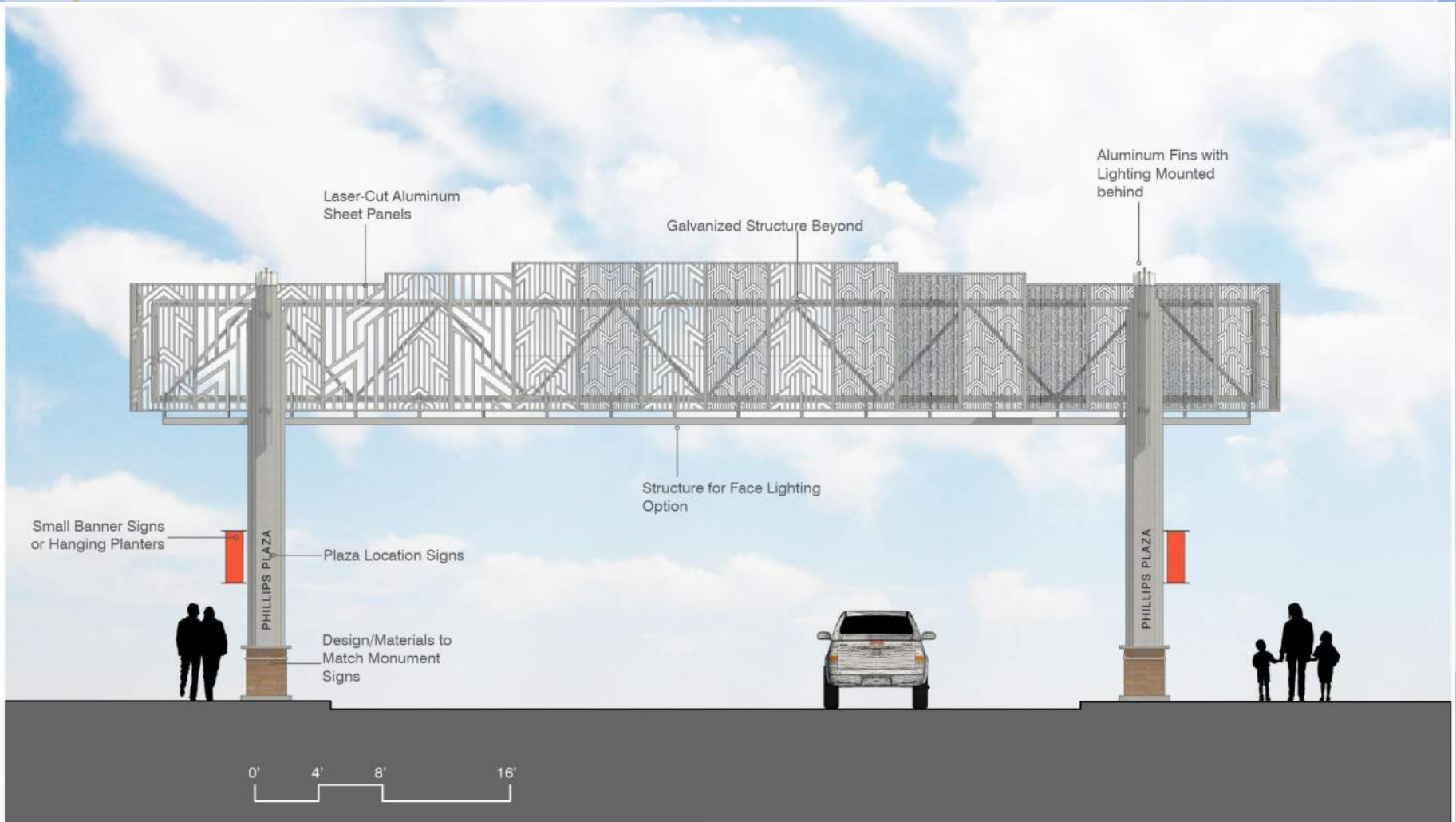
Panels progressively open up in direction of Plazas

- Art Deco pattern design opens up towards direction of plazas.
- Columns match style of newly proposed streetscape signage markers
- Laser-cut sheets of 4'x8'-10' - 3/16" thick anodized aluminum.





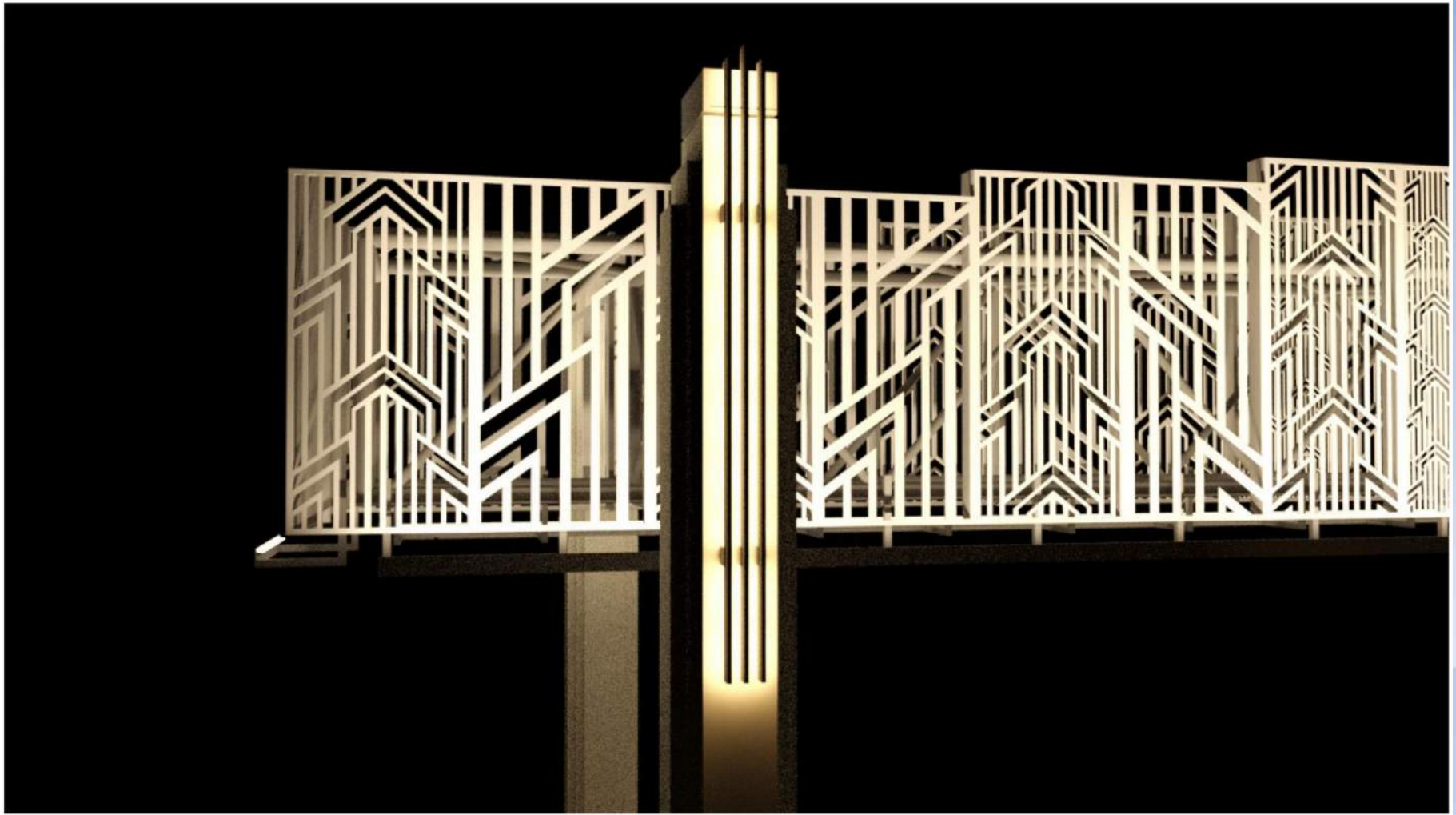
# Overhead Structures Design



# Overhead Structure Lighting



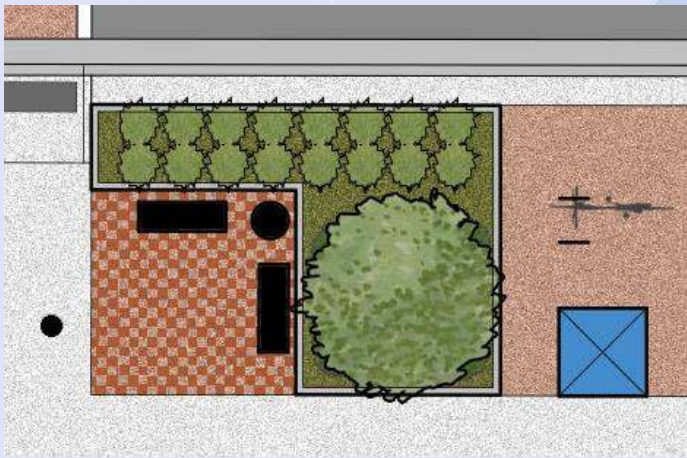
# Overhead Structures Lighting Detail



# Intersection Node



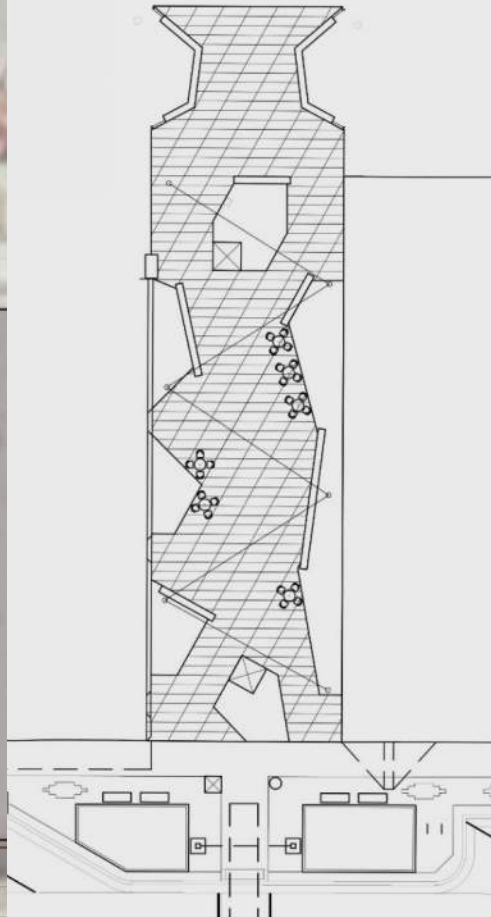
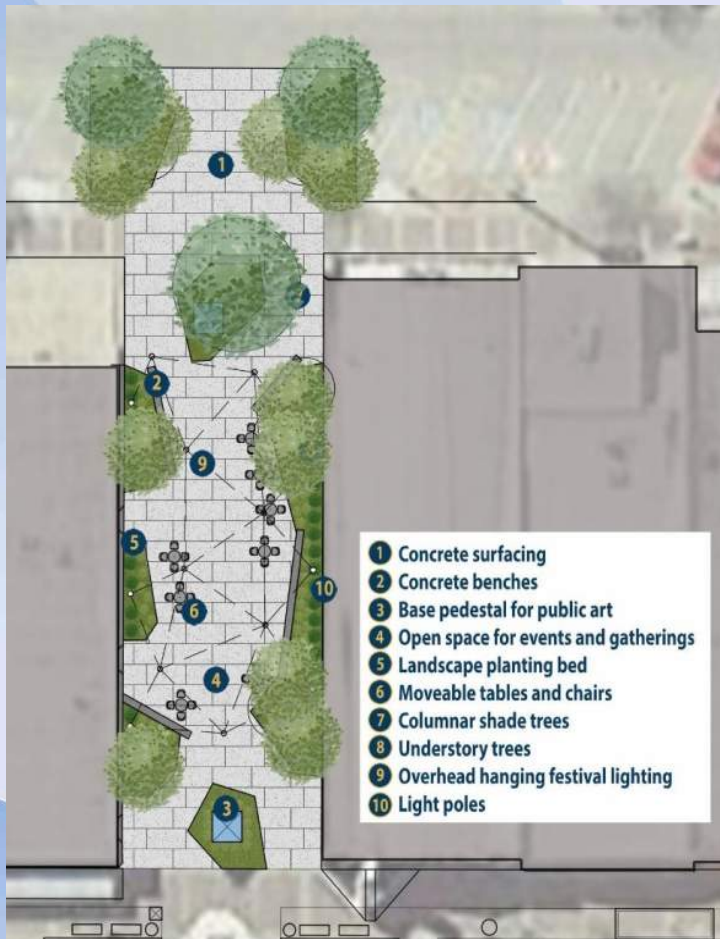
# Mulberry / Santa Fe Intersection



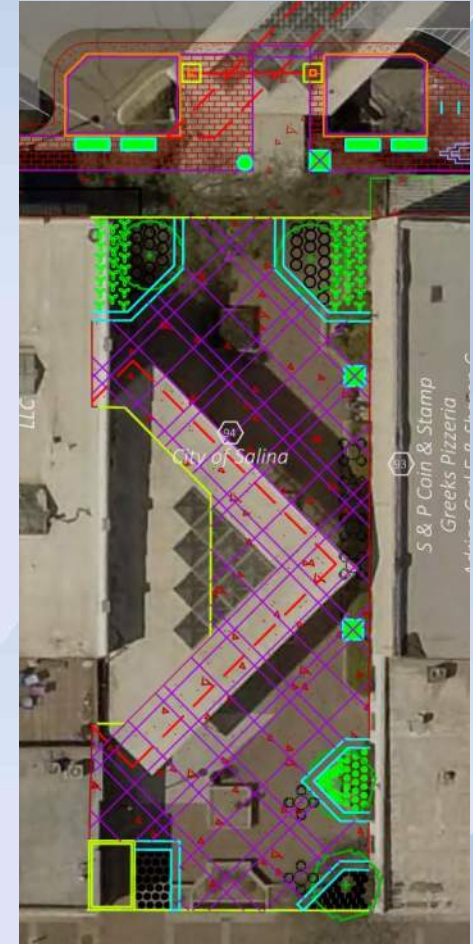
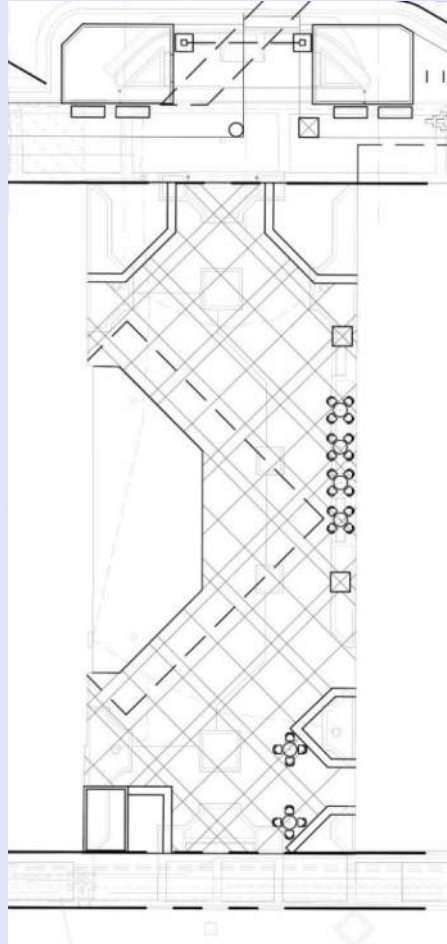
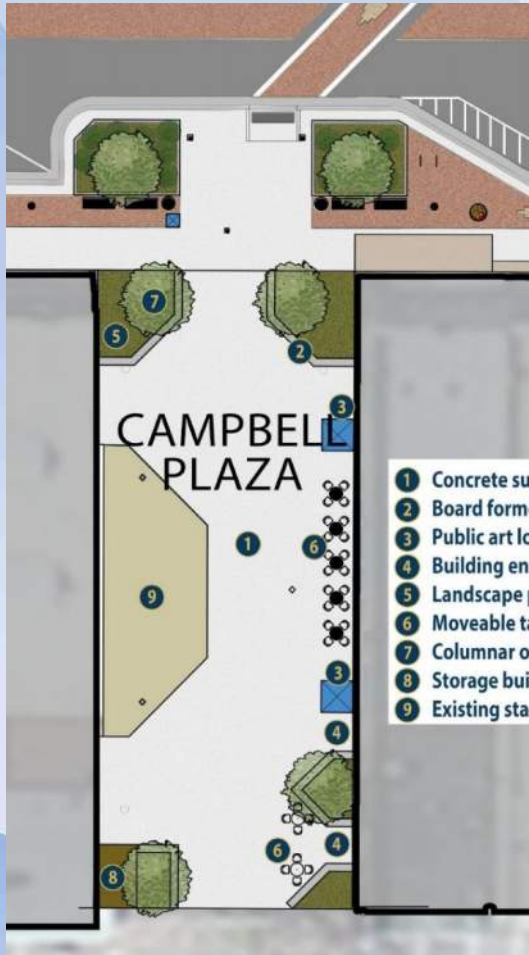
# Walnut / Santa Fe Intersection



# Spilman Plaza

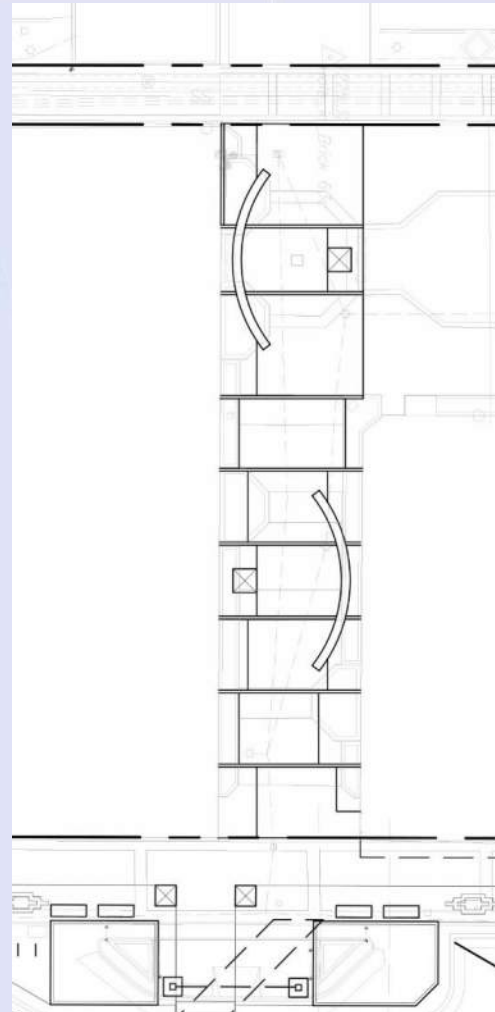


# Campbell Plaza

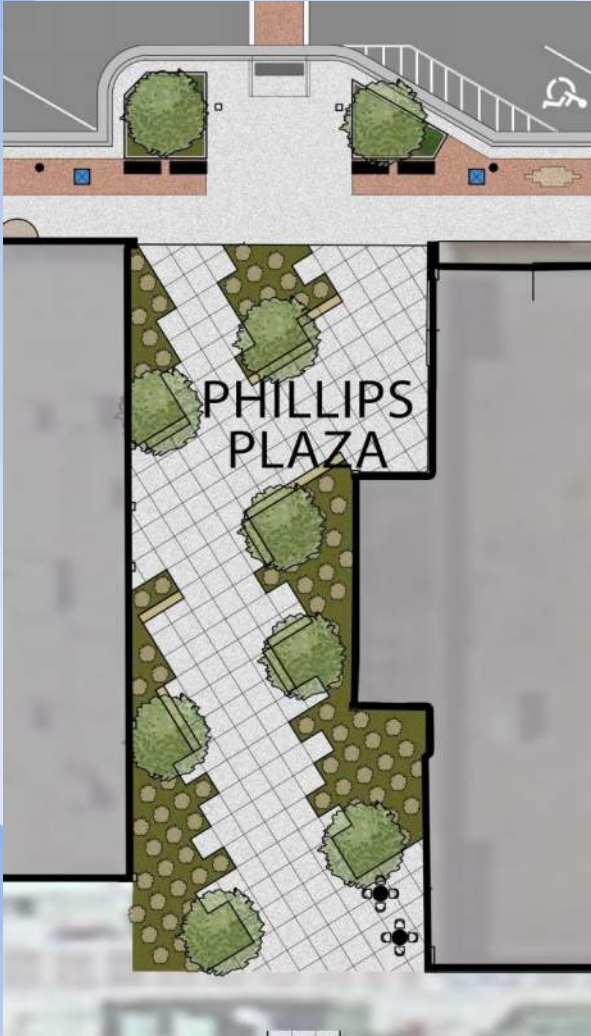


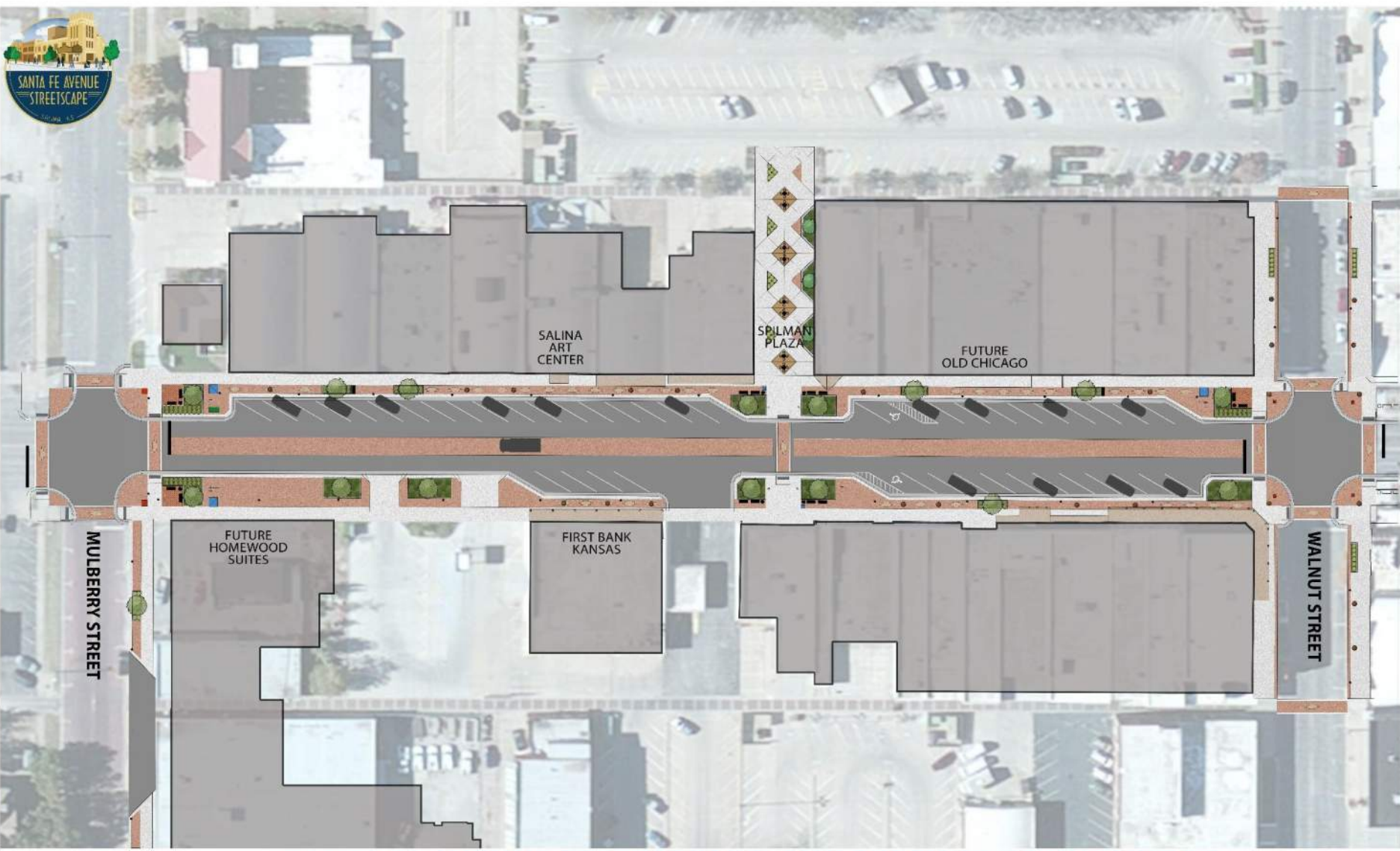


# Strand Plaza



# Phillips Plaza





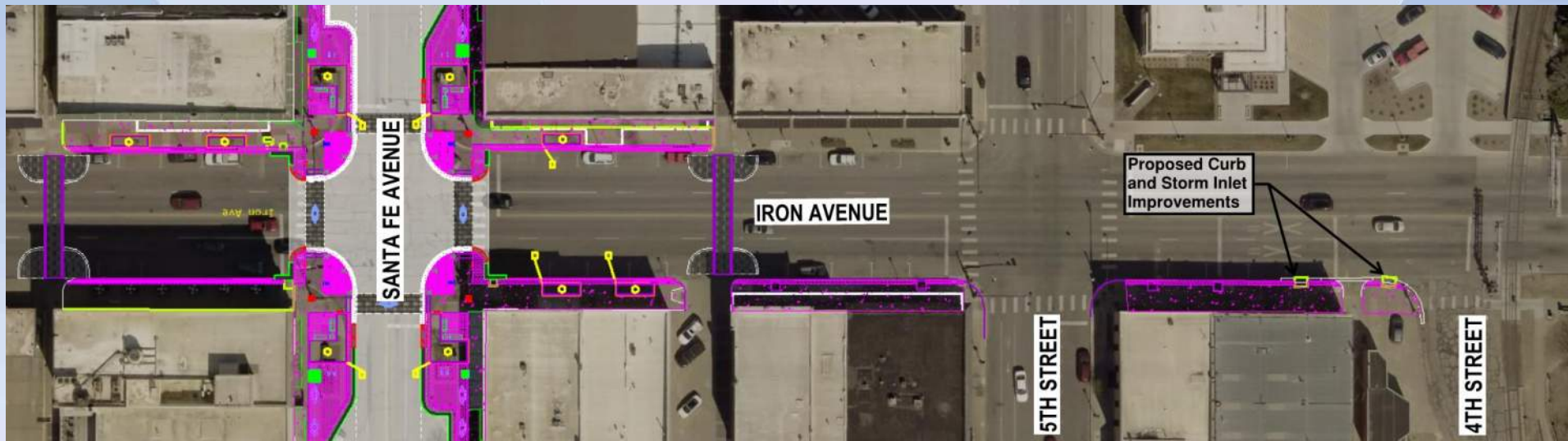
**SANTA FE AVENUE STREETScape: MULBERRY ST. TO WALNUT ST.**



# Mulberry Streetscape



# Iron Streetscape and Drainage Improvements



# Estimated Construction Costs

Phase 1 Areas	Area Subtotal	5% Contingency	Area Total
Santa Fe & Ash Intersection	\$457,993	\$22,900	\$480,893
Santa Fe, Ash to Iron	\$1,596,281	\$79,814	\$1,676,095
Santa Fe & Walnut Intersection, Theatre	\$542,289	\$27,114	\$569,404
Santa Fe, Walnut to Mulberry	\$1,537,300	\$76,865	\$1,614,165
Santa Fe & Mulberry Intersection	\$304,622	\$15,231	\$319,853
Mulberry, Santa Fe to 4th (Homewood Suites)	\$206,442	\$10,322	\$216,765
The Alley Entertainment Center Area (Ash St.)	\$649,505	\$32,475	\$681,981
<b>Phase 1 Total:</b>			<b>\$5,559,155</b>
Phase 2 Areas	Area Subtotal	5% Contingency	Area Total
Santa Fe & Elm Intersection	\$338,684	\$16,934	\$355,618
Santa Fe, Elm to Ash	\$1,247,899	\$62,395	\$1,310,294
Santa Fe & Iron Intersection	\$592,149	\$29,607	\$621,757
Santa Fe, Iron to Walnut	\$1,762,826	\$88,141	\$1,850,967
<b>Phase 2 Total:</b>			<b>\$4,138,635</b>
<b>Base Bid Project Total:</b>			<b>\$9,697,790</b>
Add Alternates	Alt. Subtotal	5% Contingency	Alt. Total
1. Campbell Plaza	\$423,976	\$21,199	\$445,175
2. Phillips Plaza	\$233,263	\$11,663	\$244,927
3. Strand Plaza	\$186,831	\$9,342	\$196,173
4. Spilman Plaza	\$297,434	\$14,872	\$312,306
5. Mid-Block Side Street Crossings	\$60,382	\$3,019	\$63,401
6. Mulberry, 4th to 2nd	\$200,411	\$10,021	\$210,432
<b>Bid Alternate Total:</b>			<b>\$1,472,413</b>
<b>Project Total and Bid Alternates:</b>			<b>\$11,170,203</b>



**QUESTIONS?**